

EIKON

Exhibition Centre





EIKON

CONTENTS

4	Introduction
7	Made for Events
8	Our Services
11	Travel and Transport
12	Northern Ireland
15	Eikon
17	Logan Hall
19	Balmoral Park

WELCOME TO EIKON EXHIBITION CENTRE AT BALMORAL PARK

The Eikon Exhibition Centre is Northern Ireland's largest events venue, with 10,600 square metres of indoor event space in a 55 acre site. Opened in November 2015, the Eikon Exhibition Centre was purpose-built to serve the large events industry in Northern Ireland, with event organisers needs and requirements in mind.

The Eikon has already proven to be a major player in the UK and Ireland events market hosting a huge range of events and welcoming hundreds of thousands of attendees.

With a dividable and accessible 10,600 square metres of event space, the Eikon provides organisers with an effective, customised solution, tailored to specific requirements on an event-by-event basis.

The Eikon Exhibition Centre is highly accessible for business and consumer events alike, as well as corporate dinners,

trade shows and everything in-between. Located just 15 minutes from Belfast in Lisburn, the Eikon is ideally situated on a major intersection of the M1 motorway and the main arterial route between Belfast and Dublin, making it accessible to both urban and rural communities.

As a venue, the Eikon has exactly what event organisers are looking for — a superb infrastructure, state of the art event facilities and an ideal location — combined with an operations team that is experienced, innovative and success driven. The Eikon offers proposals that are tailored to each event and its' requirements.

The Eikon team works alongside event organisers to ensure all the necessary support is given throughout the planning process to develop the success and improve the sustainability of each event.

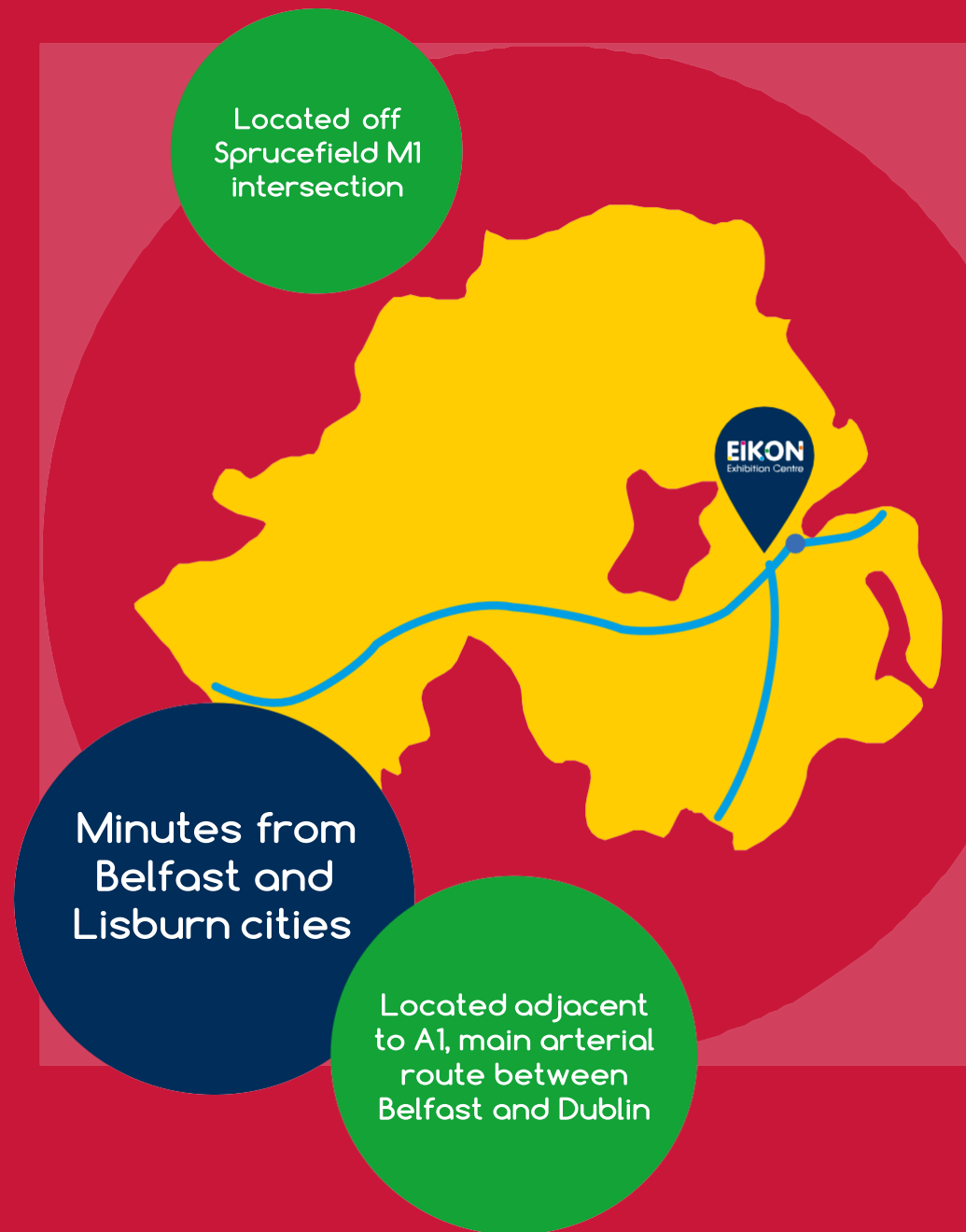






EIKON MADE FOR EVENTS

- 10,600sqm of flexible, dividable and accessible event space
- 55 acres events park
- 4,000+ free on-site car parking spaces
- Purpose-built for exhibitions
- State of the art facilities
- Organisers office with secure room
- 1GB fibre optic broadband
- Entrance foyer with ticket/registration booths and separate Wifi
- Exhibition electricity bus-bar and waste water systems
- Site traffic management plans tailored to your event
- Coach/bus route with separate parking
- Designated exhibitor parking
- Experienced and innovative team
- Tailored event management and commercial proposals available
- Under 30 minutes from two main regional airports and ferry port
- Highest median earnings for Northern Ireland within local council area
- Premium catering facilities using locally sourced ingredients
- International standard arenas
- Hundreds of rooms available in local hotels
- Outdoor space for temporary structures and further event activities





OUR SERVICES

PLANNING YOUR EVENT

All event organisers will begin their Eikon journey with our account manager, who will create a tailored proposal reflective of individual requirements. Event organisers will have the opportunity to view the venue and discuss their business model and event brief.

Organisers will discuss the operations and logistics of their event with the Eikon's operations manager. The operations manager discusses the space, services and equipment requirements with the organiser and consults with them on the traffic and crowd management preparation for the event. The operation manager will deliver the venue facilities in accordance to the organisers requirements.

During the live event, the Eikon will provide a venue manager to be on site for the duration of the event. The venue manager will give direction to the security, first aid and housekeeping personnel operating on site and will ensure that the venue facilities are available to the highest standard during the event.

Both prior and following the event, the Eikon endeavours to arrange meeting with the organiser and all members of the team so that all aspects of the event can be discussed and agreed as a team.

In addition to the venue's facilities, the Eikon has additional stock available to hire to add to any event – including forklift and driver hire, polyprop chairs, grandstand seating trailer, crowd barriers, tiger barriers, heras fencing, stage, banqueting chairs and ticket booths.

ADDITIONAL HIRE REQUIREMENTS

The Eikon Exhibition Centre has many state of the art facilities that accompany a first class venue. Should event organisers require anything over and above the facilities offered at the venue, the team have worked with a number of different contractors and suppliers from which additional equipment can be hired.





CATERING

The Eikon Exhibition Centre works with a designated caterer to provide a variation of hot and cold food for both the attendees of an event, and the event organisers team. All ingredients are locally sourced in Northern Ireland.



WI-FI & TECH SOLUTIONS

Eikon Exhibition Centre is fully wireless enabled and has been recently upgraded to fibre. For any additional communication requirements, the venue is happy to assist and work with event organisers to install any additional connections.



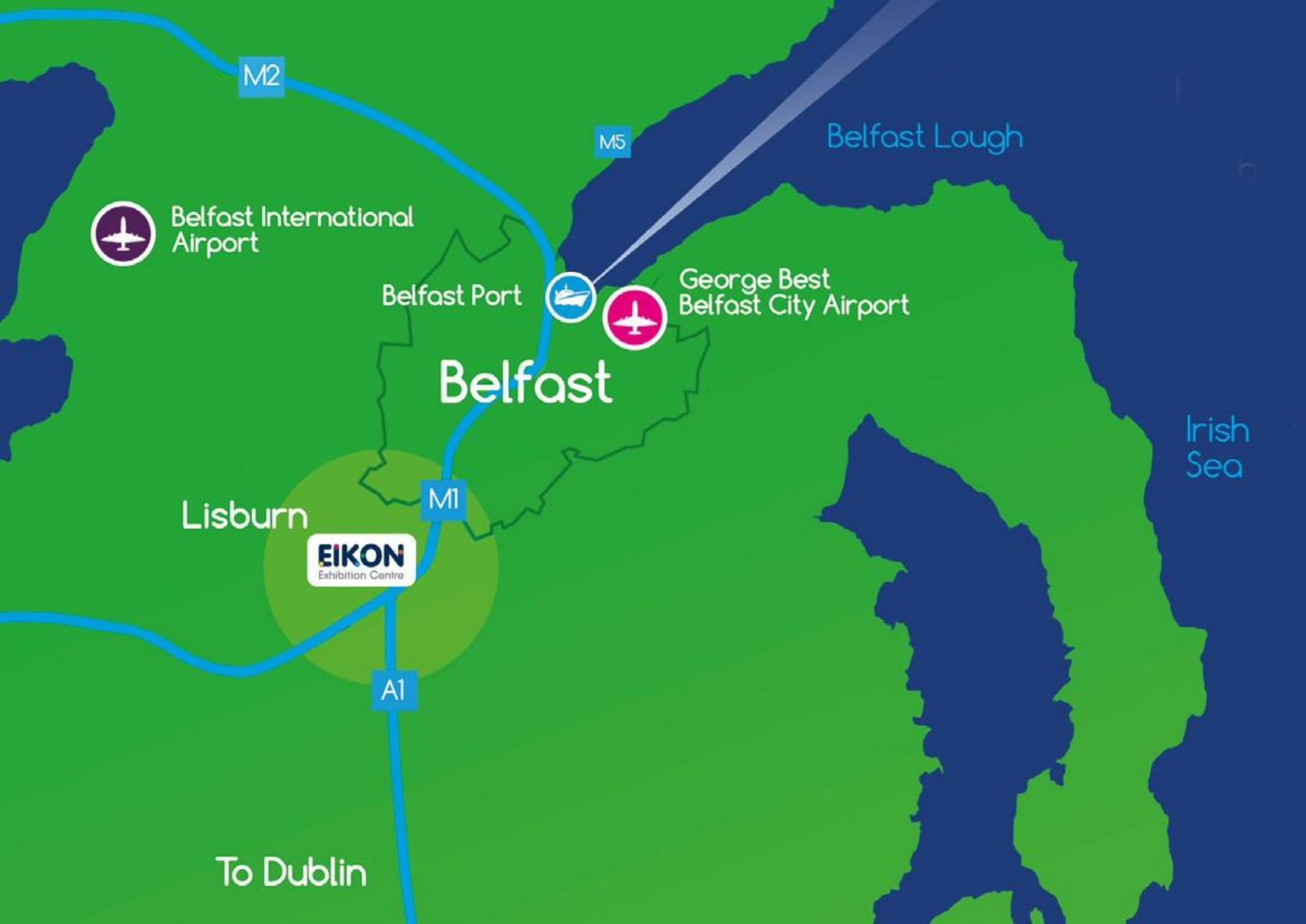
LEADING CONTRACTORS

The Eikon Exhibition Centre works with industry-leading, reputable contractors to provide the highest quality services in security, first aid, cleaning and catering. Our contractors are all recognised as being the best in their fields.



EXHIBITION SPECIFICATION

The Eikon Exhibition Centre is purpose-built for exhibitions, with loading doors throughout the venue, electricity bus bars throughout the venue, access to water and plumbing, organisers office, ATM, 4,000 free car parking spaces and thirteen 5m wide loading bays and doors.



M2

M5

Belfast Lough



Belfast International
Airport

Belfast Port



George Best
Belfast City Airport

Belfast

Lisburn

M1

EIKON
Exhibition Centre

A1

Irish
Sea

To Dublin

TRAVEL AND TRANSPORT



BY AIR

The Eikon Exhibition Centre is within a 30 minute drive of two main regional airports, Belfast International Airport and George Best Belfast City Airport. The airports offer up to 30 flights per day between Northern Ireland and mainland UK.

Furthermore, Dublin Airport is only a 90 minute drive away with up to 740 scheduled flights per day.



BY SEA

The Eikon Exhibition Centre is within a 30 minute drive of the two main ports in Northern Ireland, Belfast Harbour and Larne Harbour. Transporting goods by sea between mainland UK and Northern Ireland has never been easier, with 12 sailings a day operating out of Belfast Harbour and 49 sailings per week operating out of Larne Harbour.



BY LAND

The Eikon Exhibition Centre is located at the A1 and M1 intersection, close to Sprucefield in Lisburn.

The Eikon Exhibition Centre is within a 15 minute drive from Belfast city centre, and a 90 minute drive from Dublin city centre.

The Eikon is a 5 minute taxi drive away from Lisburn rail station, and the venue team works closely with two designated taxi firms.



LOCATION

The Eikon sits within a 90 minute radius of 4 million people, and is located within the council area with the highest median earnings, and is within a 30 minute drive of 70% of the NI population.

NORTHERN IRELAND MADE FOR EVENTS

Northern Ireland is growing considerably in the events sector, with an increasing number of organisers choosing Northern Ireland as the next destination for their events. Northern Ireland offers a first class environment for doing business and with a £63 million sales market (Inter Trade Ireland), many B2B and B2C events are hoping to expand into Northern Ireland.

Northern Ireland has a vibrant and thriving exhibition and events sector which has the facilities, skills and experience to deliver world class events.

The region is renowned not only for its work ethic, but for the friendliness of the people and the quality of life. It offers more than simply skilled people, competitive costs and great infrastructure: it's a location that delivers altogether more for event organisers.

The region has a strongly pro-business climate. As part of the UK, the region benefits from the strength of the UK economy and its' low-inflation, low-interest rate climate.

The province is now more accessible than ever, with up to 40 flights per day between Belfast and Great Britain. In addition, there are up to 12 sailings per day operating out of Belfast Harbour.

With an affluent economy and a growing events industry, Northern Ireland is a warm and welcoming destination for both businesses and consumers alike.



The Eikon Exhibition Centre is:



20 MINUTES FROM 750,000 PEOPLE
90 MINUTES FROM 4 MILLION PEOPLE
WITHIN 30 MINUTES OF 70% OF THE
NORTHERN IRELAND POPULATION



15 MINUTES FROM BELFAST
CITY CENTRE
85 MINUTES FROM DUBLIN



LOCATED WITHIN THE
COUNCIL AREA WITH THE
HIGHEST MEDIAN EARNINGS

The province has won
a number of awards in
Recent years to include:

LONELY PLANET
Best Region in the World

INTERNATIONAL TRAVEL
& TOURISM AWARDS
Best Food Destination

NATIONAL GEOGRAPHIC
Rising Star of Tourism

FDI INTELLIGENCE
Best Business Friendly City

C&IT AWARDS
Best Events Destination

FDI INTELLIGENCE
Global City of the Future





Purpose-built
exhibition
specification and
state of the art
facilities

EIKON

100m x 50m

KEY

VD

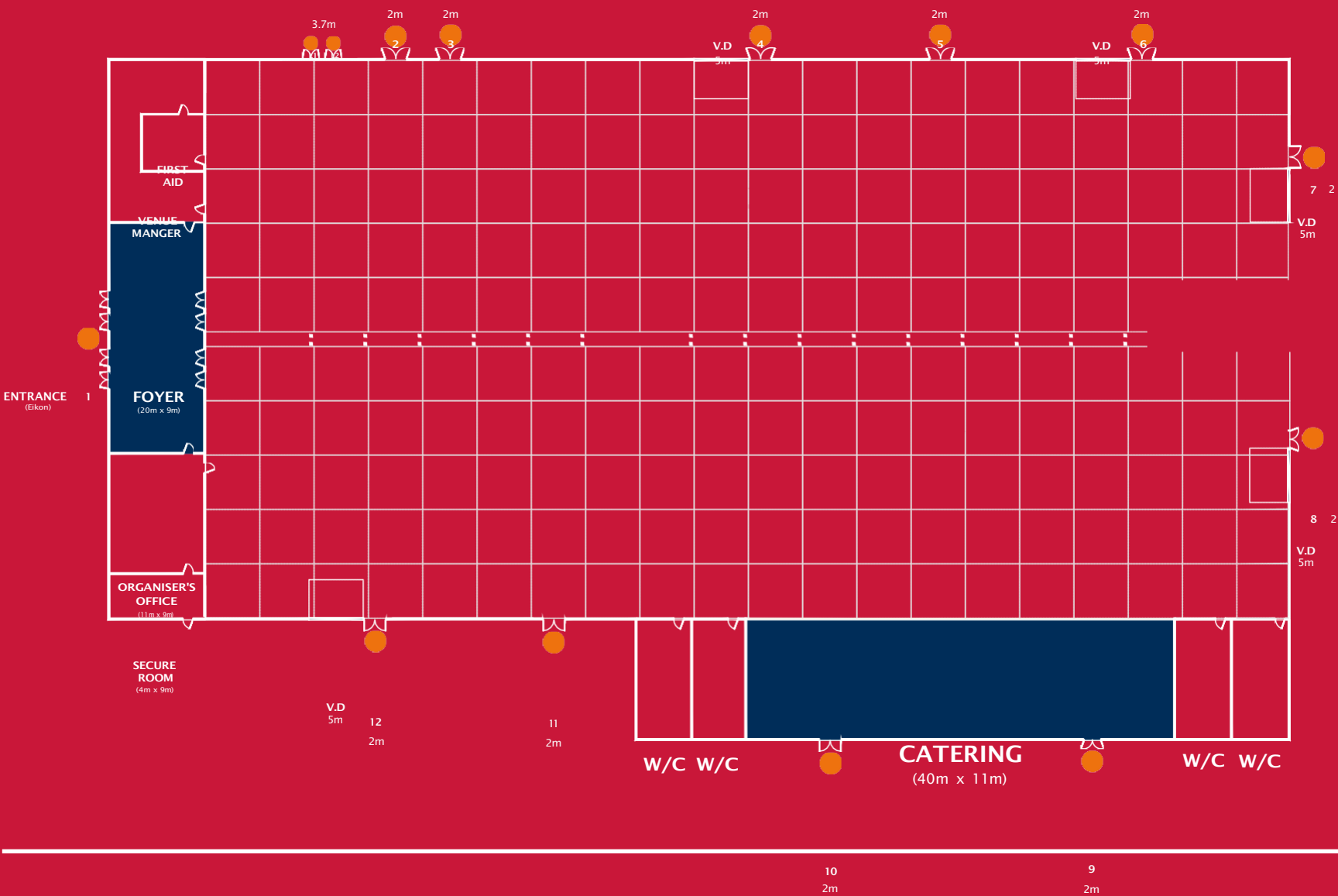
Vechicle Doors

W/C

Bathrooms

Door Numbers

5m x 5m



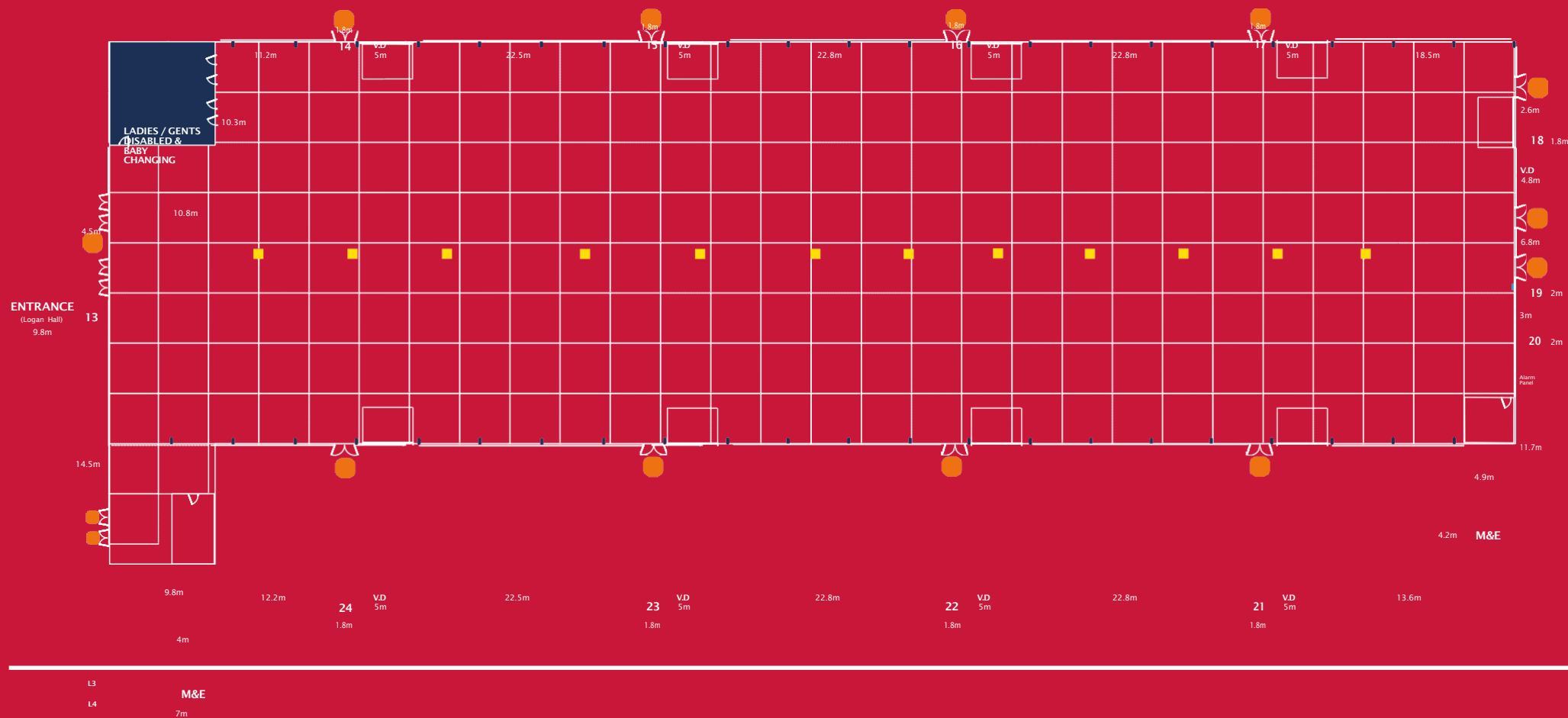


Experienced and
dedicated team

140m x 40m external
139.5m x 38.5m internal

139.5m x 38.5m internal

- VD Vehicle Doors
- W/C Bathrooms
- Door Numbers
- 5m x 5m
- Electric Access from floor
- Supports 0.3w x 0.5m depth, 6m between each





4,000+ free
on-site
car parking
spaces



Balmoral Park

55 acres events park



Eikon Exhibition Centre

Balmoral Park
Halftown Road
Lisburn

BT27 5RF

028 9066 5225

events@eikon.uk.com

eikonexhibitioncentre.co.uk